



## Component

Nano Probe Unit	: 1
Controller Electronics	: 1
Notebook PC	: 1
Pt:Ir Probe	: 1
Accessories	: 1
Manual	: 1

## Specifications

### Nano Probe Unit

XY Range	
Coarse	+/- 2.5 mm in 150 nm steps
Fine	less than 1 um in 0.1 nm steps
Z Range	
Coarse	+/- 1.5 mm in 150 nm steps
Fine	less than 1 um in 0.1 nm steps
Sample Size	10 mm X 10 mm X 1 mm
Weight	less than 1000g

### Controller Electronics

External Input	D-sub +/- 10 V
External Output	D-sub
Interface	Parallel I/O
Power Source	AC100V (50/60Hz)

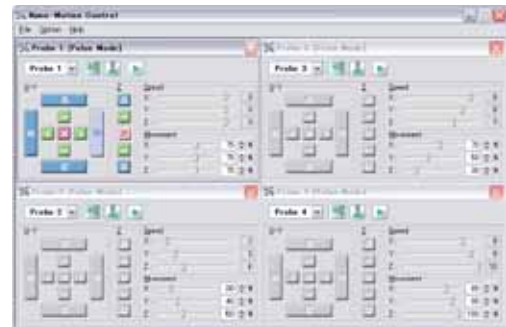
### Notebook PC

OS	Windows XP
Preinstalled exclusive software.	

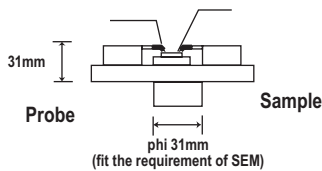
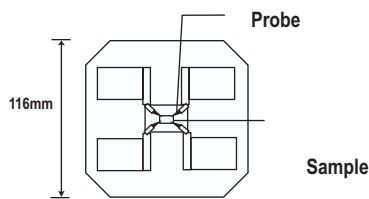
### Options

The Number of Probe (increase / decrease)
Sample Heating / Cooling
SPM (STM, AFM, etc.) Feedback control function
Others

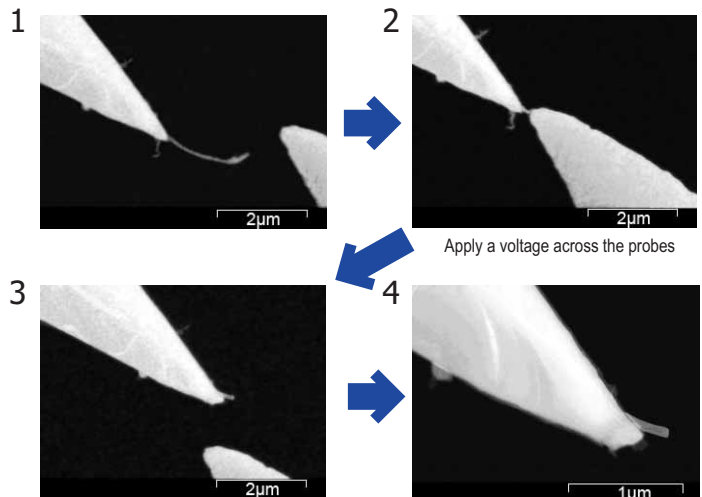
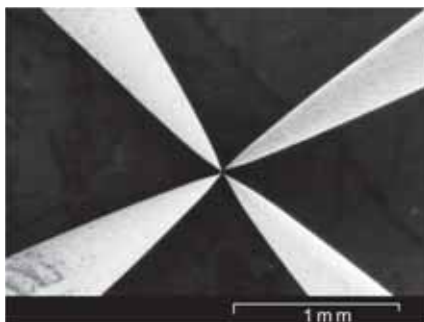
This image is product with of z position of 4 individual probes.



Application Window



The schematic drawings for a typical nano probe stage unit are shown above. The stage unit is fabricated to fit your SEM system. Ask for details.



Contribution by M. Yoshimura, Ueda Lab., Toyota Technological Institute.

Instrumental components subject to change without prior notice for improvement in performance.

## Unisoku Co., Ltd.

2-4-3, Kasugano, Hirakata, Osaka 573-0131, Japan

Tel: 81-72-858-6456 Fax: 81-72-859-5655

e-mail: info@unioku.co.jp

URL: <http://www.unisoku.co.jp>